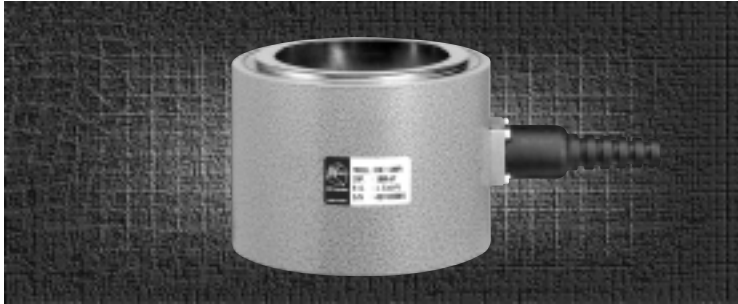


# CHE Center hole load cell, 20tf - 200tf

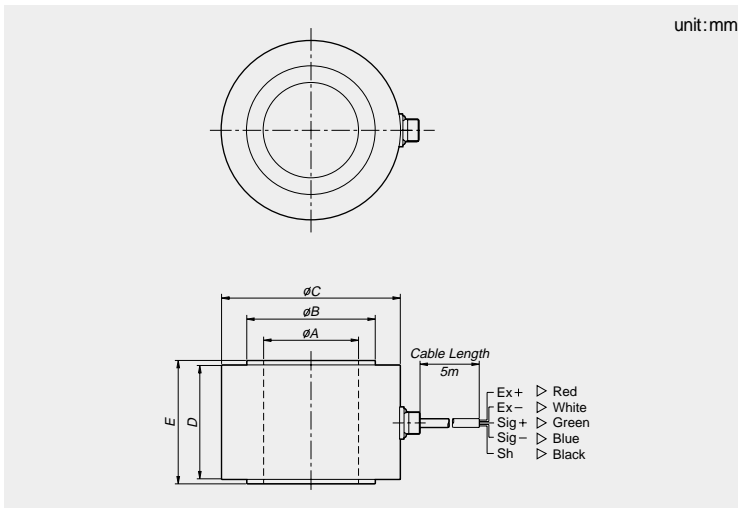


## FEATURES

- Center hole compression load cell
- Safety designed
- High reliability

| Capacity | Type | A   | B   | C   | D   | E   |
|----------|------|-----|-----|-----|-----|-----|
| 20tf     | A    | 35  | 45  | 75  | 69  | 75  |
| 50tf     | A    | 50  | 67  | 100 | 69  | 75  |
| 100tf    | A    | 75  | 99  | 123 | 94  | 100 |
|          | B    | 100 | 119 | 145 | 94  | 100 |
| 150tf    | A    | 75  | 109 | 135 | 94  | 100 |
|          | B    | 125 | 148 | 178 | 104 | 110 |
| 200tf    | A    | 125 | 155 | 186 | 104 | 110 |

## DIMENSIONS



## SPECIFICATIONS

|                               |                                 |
|-------------------------------|---------------------------------|
| Max. capacity                 | 20, 50, 100, 150, 200tf         |
| Rated output                  | 1.5mV/V(300 $\mu$ e at G/F 2.0) |
| Zero balance                  | 0 $\pm$ 0.015mV/V               |
| Combined error                | 1.0%R.O.                        |
| Repeatability                 | 0.2%R.O.                        |
| Creep for 30min.              | 0.03%R.O.                       |
| Temperature effect on         |                                 |
| Zero Value                    | 0.03%R.O./10 $^{\circ}$ C       |
| Output value                  | 0.03%R.O./10 $^{\circ}$ C       |
| Excitation                    |                                 |
| Recommended                   | 10V                             |
| Maximum                       | 15V                             |
| Resistance                    |                                 |
| Input                         | 400 $\pm$ 20 $\Omega$           |
| Output                        | 350 $\pm$ 3.5 $\Omega$          |
| Insulation                    | > 2,000 M $\Omega$              |
| Compensated temperature range | - 10 to +40                     |
| Operating temperature range   | -20 to +80                      |